

# SOMFY INSTRUCTIONS

## IR Transmitters

### Single & Eight Channel

Part #  
1870133 IR 1 Remote  
1870132 IR 8 Remote



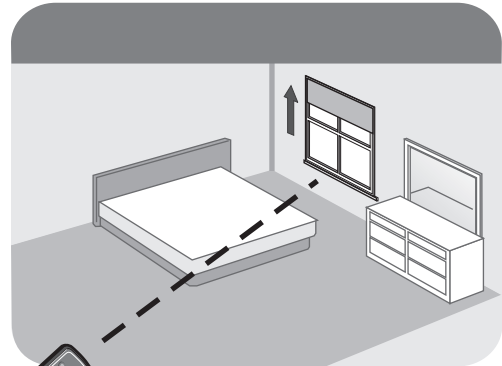
IR 1



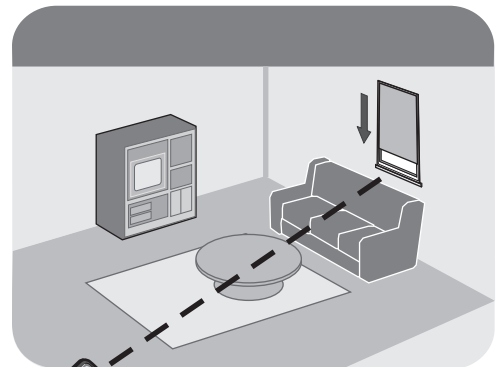
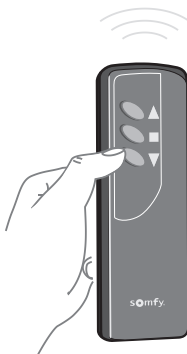
IR 8

#### OPERATING INSTRUCTIONS - SINGLE CHANNEL IR 1 REMOTE

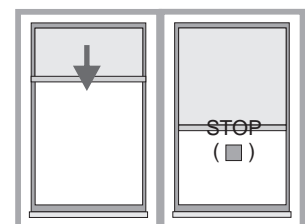
1. To raise your window shade, point the remote at the shade(s) you want to operate and press the UP button.



2. To lower your window shade, point the remote at the shade(s) you want to operate and press the DOWN button.

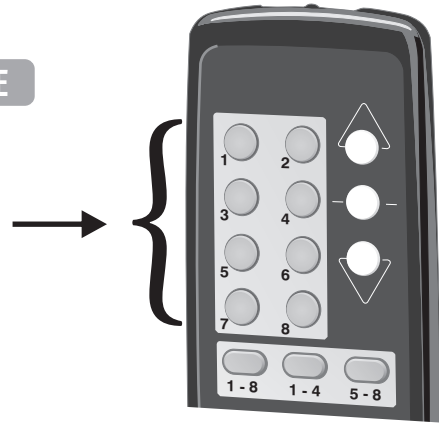


3. If you want to stop your shade(s) while in motion, point the remote and press the CENTER button.

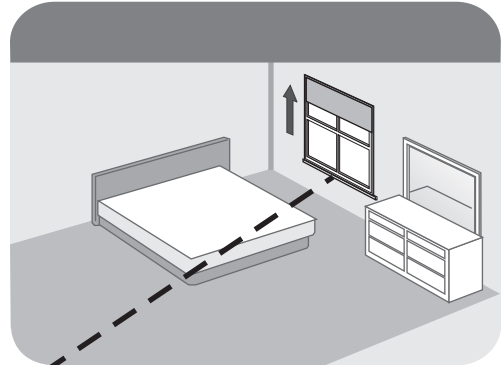


## OPERATING INSTRUCTIONS - EIGHT CHANNEL IR 8 REMOTE

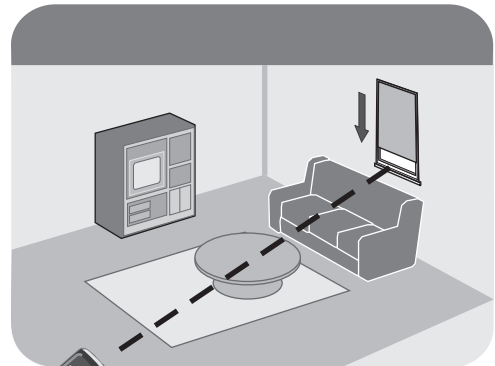
1. Press the number associated with the shade you want to operate.



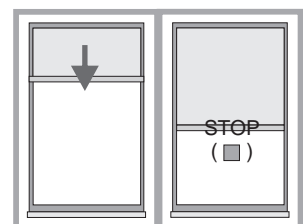
2. To raise your window shade, point the remote at the shade you want to operate and press the up (▲) button.



3. To lower your window shade, point the remote at the shade you want to operate and press the down (▼) button.



4. If you want to stop your shade while it is moving, point the remote and press the center (■) button.



**NOTE: IN CASE OF A LOST TRANSMITTER, PROFESSIONAL PROGRAMMING ASSISTANCE IS REQUIRED. PLEASE CONTACT SOMFY AT [somfytech@somfy.com](mailto:somfytech@somfy.com) OR YOUR LOCAL DEALER AT [www.somfysystems.com/locatedealer](http://www.somfysystems.com/locatedealer).**