

## Pal Gate SG-BT1-O

Based on Bluetooth smart technology, the Smart PAL BT is the perfect product to operate your gate, garage door, electric locks by a powerful application.

### Features and Advantages :

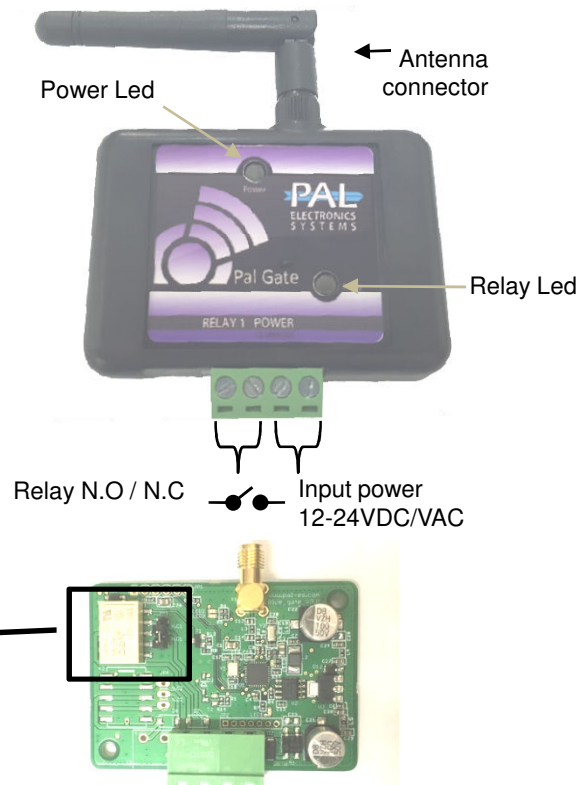
- Managed through a Web interface and app.
- Very small physical size 70X50 mm.
- 2 Indicator lights
- You can set up multiple administrators and authorized users for optimal control.
- There is no limit to the number of systems are managed.

### Lights

Power	System is on
Relay	Blinks on opening command

### Technical Specifications

Operating Voltage	12-24V AC/DC
Operating Frequency	2.4GHz
Supported Devices	IOS- Starts with IOS8 version and supported from 4S devises Android – starts with 4.4 version and support devices from 2013
Working conditions	-40°C - +85°C
Power Transmission	7 dBm



There is an option to change the relay mode using the N / O / N.C.

### System settings by the app :

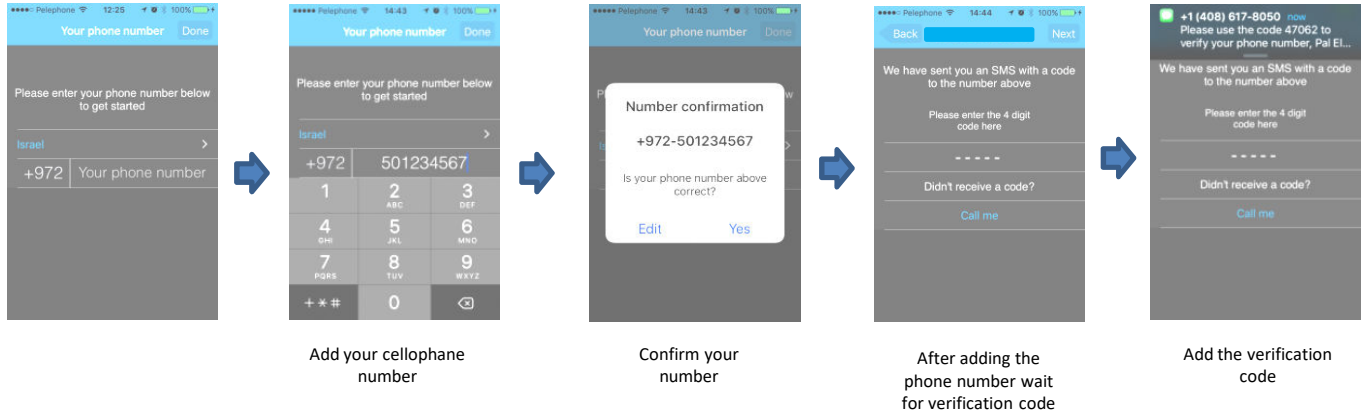
#### Primary Login:

This application must be first installed from the App Store / Google play by searching for the name PalGate or scan this QR Code for direct link.



Run the application and to act according to the instructions :

**installation:**



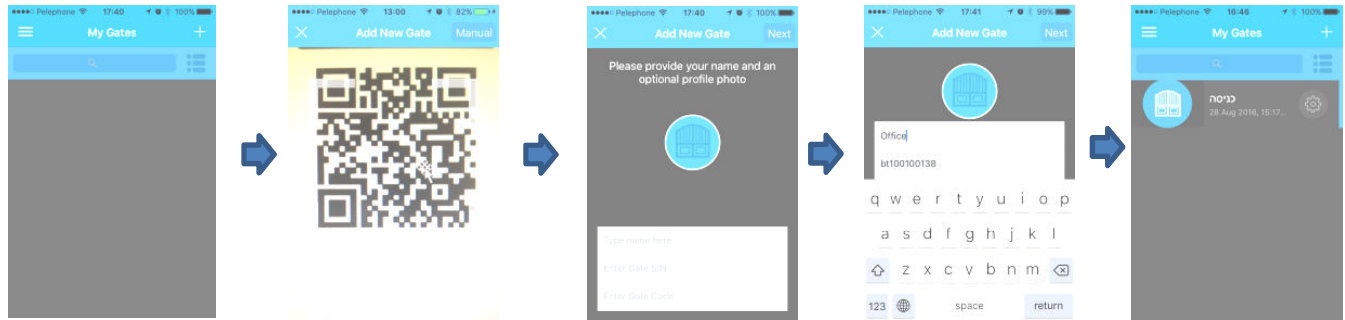
Add your cellophone number

Confirm your number

After adding the phone number wait for verification code

Add the verification code

**Gate setting:**



Click the + button to add Gate

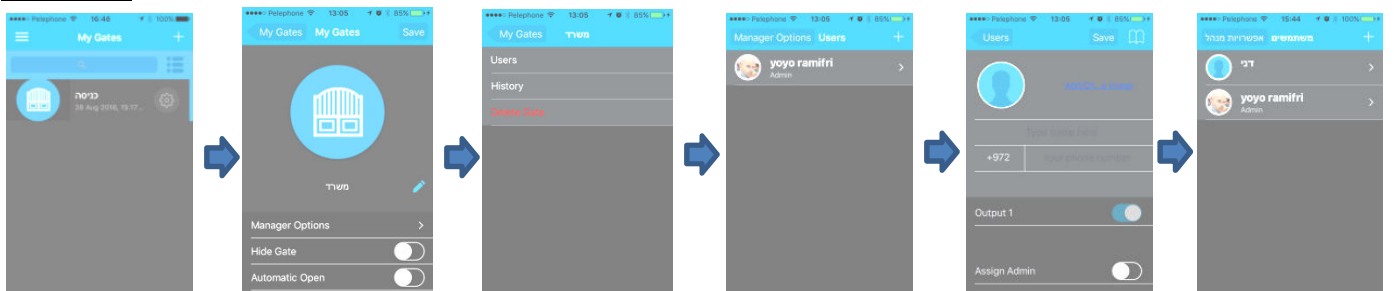
Scan barcode or add manually

Device details -Serial number and code are printed on the device and should be added accordingly

After adding the details click next

The gate will appear on my gates screen

**Add User/s:**



Click on the Gate Settings button

Click on manager options

Click on users

Click Add (+)

Add name and photo or select from the contact list and save

The user will receive a message that he is being added and will appear in the list

**Important Information:**

- **Installation at the gate (inside each metal cabinet) must be installed when connected to an external antenna (an antenna outside the cabinet).**
- Requires stable power supply source preferably DC transformers.
- Avoid installation in metal boxes.
- Protect the unit from humidity and insect infiltration.