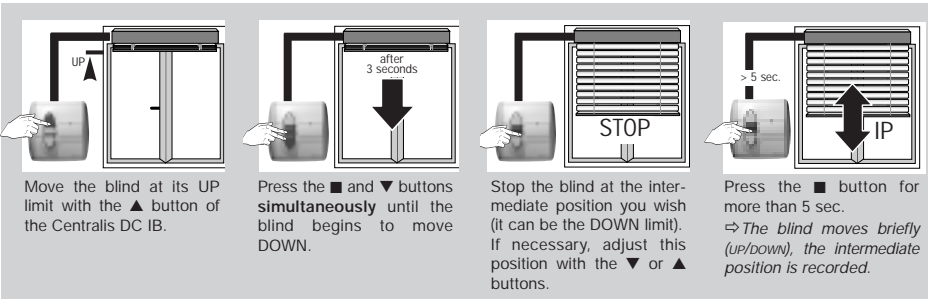
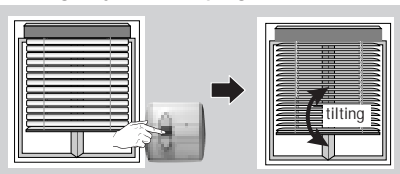


b Programming of the intermediate position - from the UP limit



c Using the tilting operation and/or the intermediate position

If tilting only has been programmed:

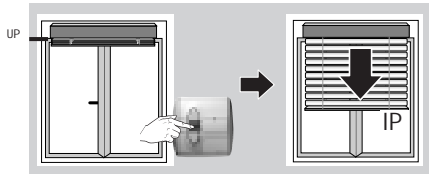


- When the blind is closed to any position (after a DOWN movement), press briefly on the ■ button.

⇒ The blind will tilt to the pre-set angle.

Note: after an UP movement, the blind will not tilt.

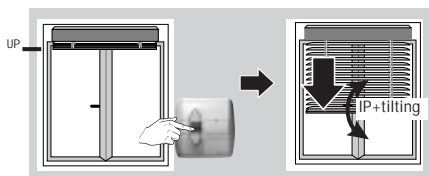
If the intermediate position only has been programmed:



- When the blind is at its UP limit, press briefly on the ■ button.

⇒ The blind will move and stop at the intermediate position.

If both intermediate position and tilting have been programmed:



- When the blind is at its UP limit, press briefly on the ■ button.

⇒ The blind will move, stop at the intermediate position and tilt to the pre-set angle.

d Delete the intermediate position/automatic tilting

If you record a new IP or a new tilting function, this will automatically erase the previous one.

If you want to erase without recording a new one, Press briefly on the ■ button to reach the IP or to get the tilting (or both), then:

- to erase the tilting, press the ■ and ▲ buttons **simultaneously** for more than 5 seconds.
- to erase the intermediate position, press the ■ and ▼ buttons **simultaneously** for more than 5 seconds.

To erase both, just press the ■ button for more than 5 seconds.

⇒ The blind will move briefly (UP/DOWN) indicating that Centralis DC IB has deleted the intermediate position and/or the tilting.

5 Trouble shooting guide

Nothing works:

- ⇒ Check the wiring of the Centralis DC IB.
- ⇒ Check the motor.
- ⇒ Check the power supply.

Phantom slat tilting:

- ⇒ Be sure to adjust the slat tilting when the blind is approximately ¾ down of the window.

Phantom intermediate position:

- ⇒ The programmed IP can only be reached at UP or DOWN limits not when the blind is in another position.

Ref.5 003 885

INSTALLATION *guide*



inteo **CENTRALIS DC IB**

CENTRALIS DC IB is an individual and/or group control for Concept 25 motors with a link to general control. It can be used with all lift/tilt and lift only blind applications.

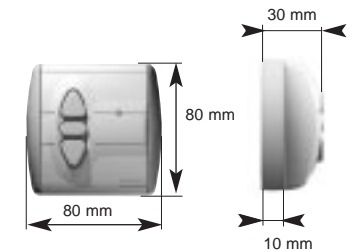
CENTRALIS DC IB is compatible with the SOMFY "IB" Bus, allowing to be controlled by "IB" systems :

- CENTRALIS IB, CHRONIS IB, CHRONIS IB LIGHT ...
- An automatic slat tilting function and an intermediate position can be programmed for the lift/tilt applications.
- Two automatic intermediate positions can be programmed for lift only applications

1 Characteristics

- Main supply : 24 VDC SELV (mini. 20 VDC / maxi. 40 VDC)
- Rated current : 2 A
- Output duration : active for 180s.
- No protection index
- For internal use only

CE

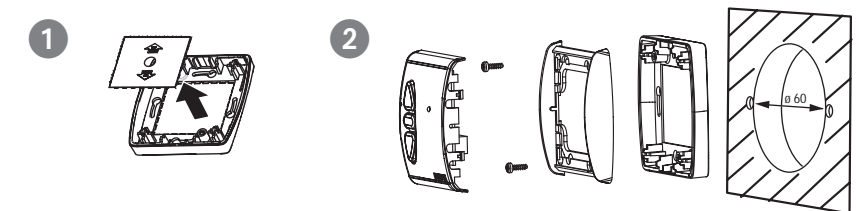


2 Installation

WARNINGS : CENTRALIS DC IB can control up to three Concept 25 motors. To supply the CENTRALIS DC IB use only SOMFY approved power supplies. Be careful that 24 V power supply connection in the motor input destroys the product.

2.1 Assembly

Recessed mounting



SOMFY SAS, capital 20.000.000 Euros, RCS Bonneville 303 970 230

SOMFY®

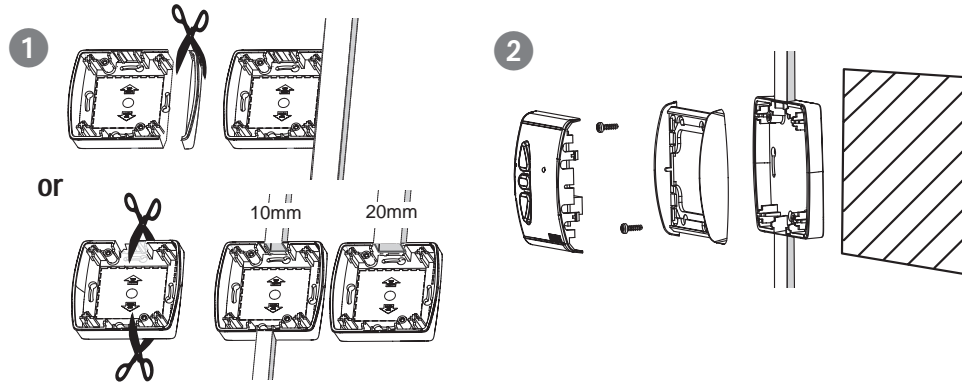
All rights reserved to make changes due to technical improvements. 6

SOMFY®

All rights reserved to make changes due to technical improvements. 1

All rights reserved to make changes due to technical improvements. 5

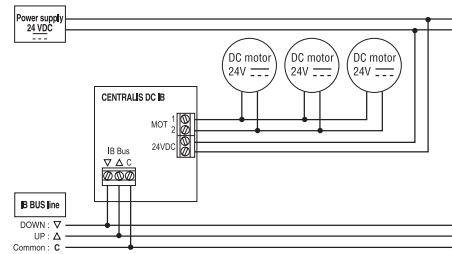
Surface mounting (with cable trunking)



2.2 Wiring



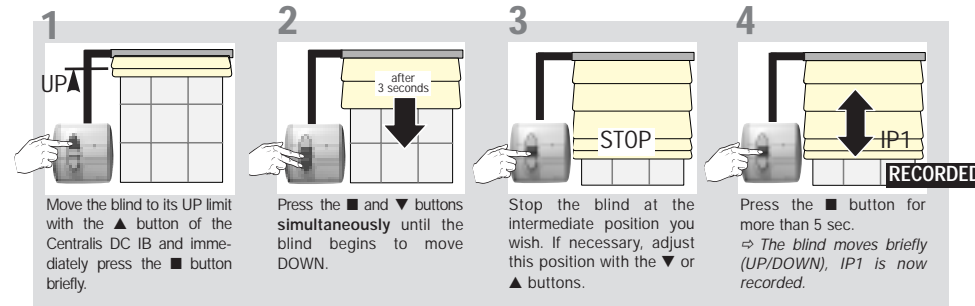
- Connect the power supply on 24 VDC input of the Centralis DC IB.
- Connect the motor(s) cables onto the Centralis DC IB.
To get the blind going down in accordance with down button of the Centralis DC IB :
Connect the motor's grey wire into the terminal 1 ⇒ the motor runs in a clock wise rotation.
Connect the motor's grey wire into the terminal 2 ⇒ the motor runs in an anti clock wise rotation.



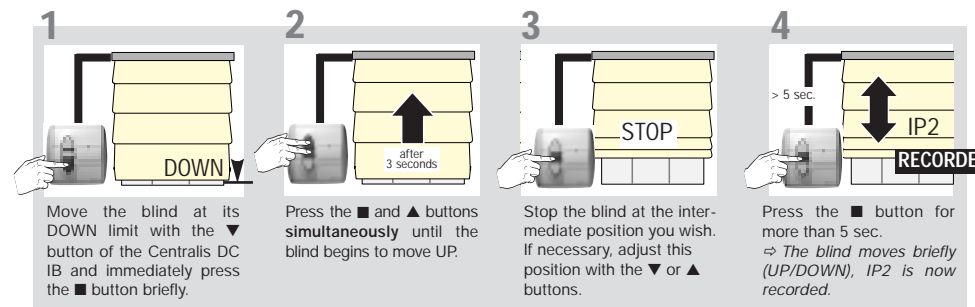
3.2 Intermediate positions

With the Centralis DC IB, it is possible to set one or two intermediate positions: one accessible at the top, when the blind is fully retracted (IP1) and one from the bottom (IP2). To record these positions, the Centralis DC IB has to record the time for the blind to go from one end limit to the desired IP.

a Programming the 1st intermediate position (IP1) - from the UP limit



b Programming the 2nd intermediate position (IP2) - from the DOWN limit



c Using the intermediate positions

- When the blind is at its UP limit:
Press briefly on the STOP button.
⇒ The blind will move and stop at the 1st intermediate position (IP1).
- When the blind is at its DOWN limit:
Press briefly on the STOP button.
⇒ The blind will move and stop at the 2nd intermediate position (IP2).

d Delete an intermediate position

If you record a new IP, this will automatically erase the previous one.

If you want to erase without recording a new one, press briefly on the STOP button to reach the IP you want to erase. Then:

- to erase IP1, press the STOP and DOWN buttons simultaneously for more than 5 seconds.
- to erase IP2, press the STOP and UP buttons simultaneously for more than 5 seconds.

To erase both, just press the STOP button for more than 5 seconds.

⇒ The blind moves briefly (UP/DOWN) indicating that the concerned intermediate position has been erased.

4 Operating of lift/tilt applications

(for lift operating, please refer to section 3)

4.1 UP/DOWN/STOP/TILT commands

Local control

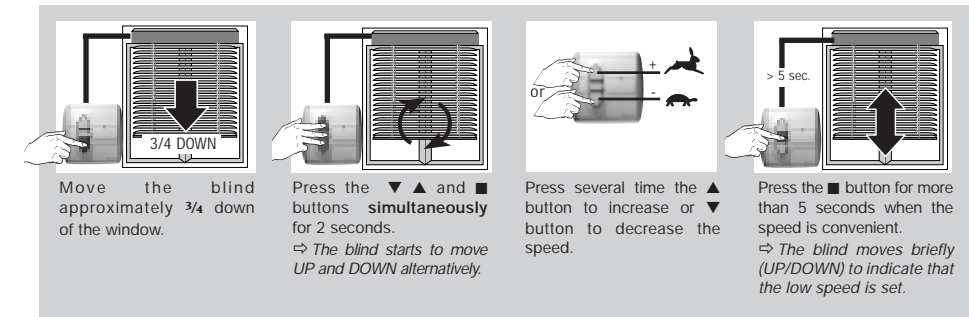
- To raise or lower the blind, press briefly the DOWN and UP buttons of the CENTRALIS DC IB.
- To stop the blind, press briefly the STOP button of the CENTRALIS DC IB.
- To tilt the slats, press and hold the DOWN or UP buttons of an CENTRALIS DC IB control. If you hold the control buttons for more than 6 seconds, the blind will start to move continuously up to its end limits.

General control

- To raise or lower the blind, press the DOWN and UP buttons of the IB CONTROL SYSTEM.
- To stop the blind, press the STOP button of the IB CONTROL SYSTEM.

4.2 TILTING speed adjustment

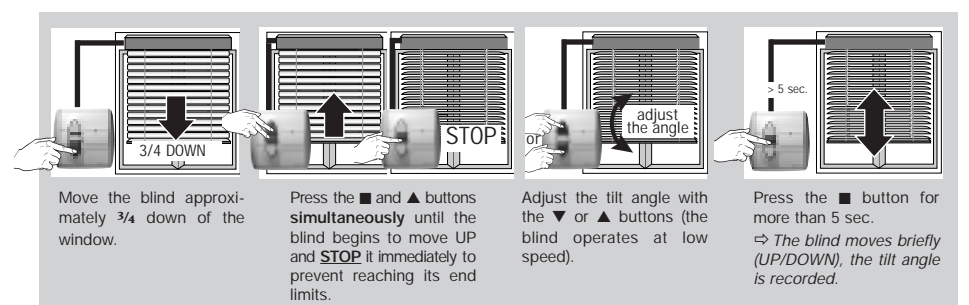
The speed of the motor can be reduced in order to make the adjustment of the slats easier during the tilting operation.



4.3 Automatic slat tilting / Intermediate position

With the Centralis DC IB, it is possible to program an automatic tilting of the slats and an intermediate position (IP). You can choose to program either the slat tilting or the IP or both.

a Programming of the slat tilting (Set tilting speed before programming the automatic tilting § 5.2)



3 Operating of lift only applications

(for lift/tilt operating, please refer to section 4)

3.1 UP/DOWN/STOP commands

Local control

- To raise or lower the blind, press briefly the DOWN and UP buttons of the CENTRALIS DC IB.
- To stop the blind, press briefly the STOP button of the CENTRALIS DC IB.

General control

- To raise or lower the blind, press the DOWN and UP buttons of the IB CONTROL SYSTEM.
- To stop the blind, press the STOP button of the IB CONTROL SYSTEM.

