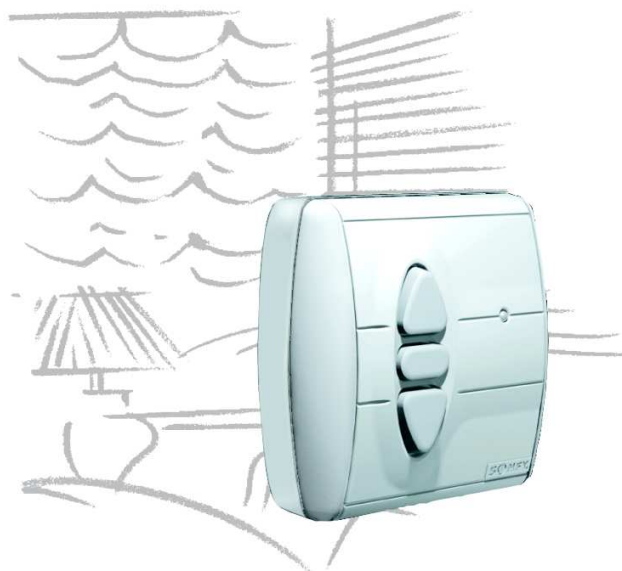


Guide



CENTRALIS DC IB

Wired intelligent control

HOME
MOTION BY

somfy®

Product Data



Wired intelligent control

- individual / group control
- IB bus connection
- drives up to 3 LW25 - B83

Adapted for all applications

- for lift / tilt applications, easy to programm:
 - adjustable tilting speed
 - automatic slat opening at any level of the window
 - intermediate position
- for lift only applications, easy to programm :
 - two intermediate positions

Easy to install

- pre-punched piece on the surface-mounted box for quick and easy wall mounting assembly
- easy and reliable wiring on power supply input : no polarity.

Easy to program

- same ergonomoy for all Inteo DC products
- visual feedback after each programming recording

Easy to use

- up and down with pulse function
- tilting with maintain function

More functions with IB bus controls :

- **GROUP CONTROL** with Centralis IB
- **LIGHT / TIMER GROUP CONTROL** with Chronis IB Light
- **TIMER GROUP CONTROL** with Chronis IB



PLEATED BLINDS



CELLULAR BLINDS



VENETIAN BLINDS



ROMAN BLINDS



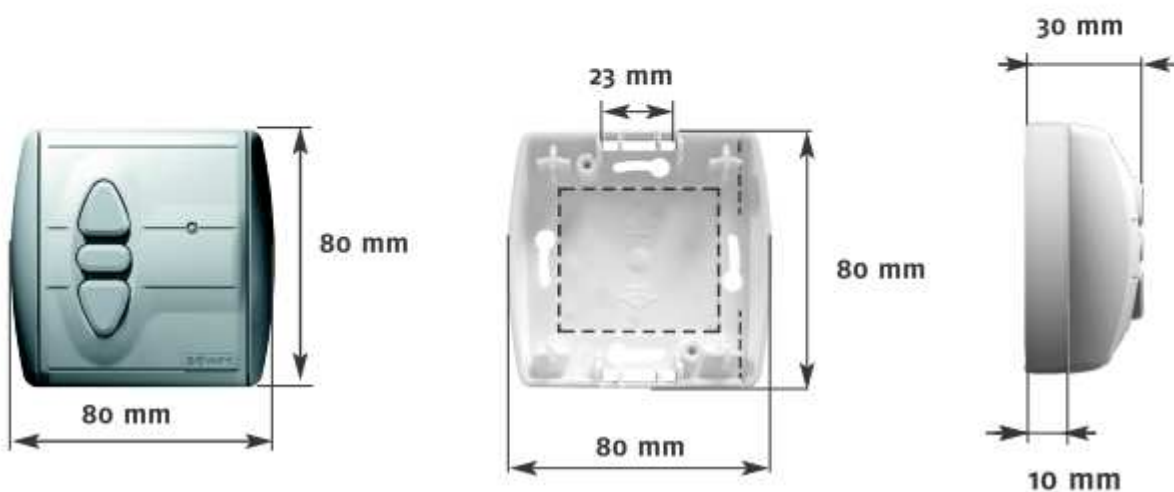
BALLOON BLINDS

Technical Data



CENTRALIS DC IB

| TECHNICAL DATA | CENTRALIS DC IB |
|---|-----------------|
| Nominal supply voltage (vdc) | 24 |
| Minimum supply voltage (vdc) | 20 |
| Maximum supply voltage (vdc) | 45 |
| Voltage drop in device (vdc) | 1.8 |
| maximum current rating (A) | 2 |
| Current consumption at 24V (mA) | 10 |
| Output temporisation (s) | 180 |
| Input and output screw terminals for wires (mm ²) | up to 2.5 |
| Dielectric strength | Class III |
| Working temperature | -10 to 60°C |
| Internal used only | |
| Protection index | no |
| Standards | CE |
| Net Weight (g) | 40 |
| Size | 80 x 80 x 30 |



Assembly instructions

ASSEMBLY:

Always use the specific surface mounted box.

① Recessed mounting

② Surface mounting (with cable trunking)

WIRING:

③ Connect the power supply on 24 VDC input of the Centralis DC IB: there is no polarity.

④ Connect the motor(s) cables onto the Centralis DC IB.

To get the blind going down in accordance with down button of the Centralis DC IB:

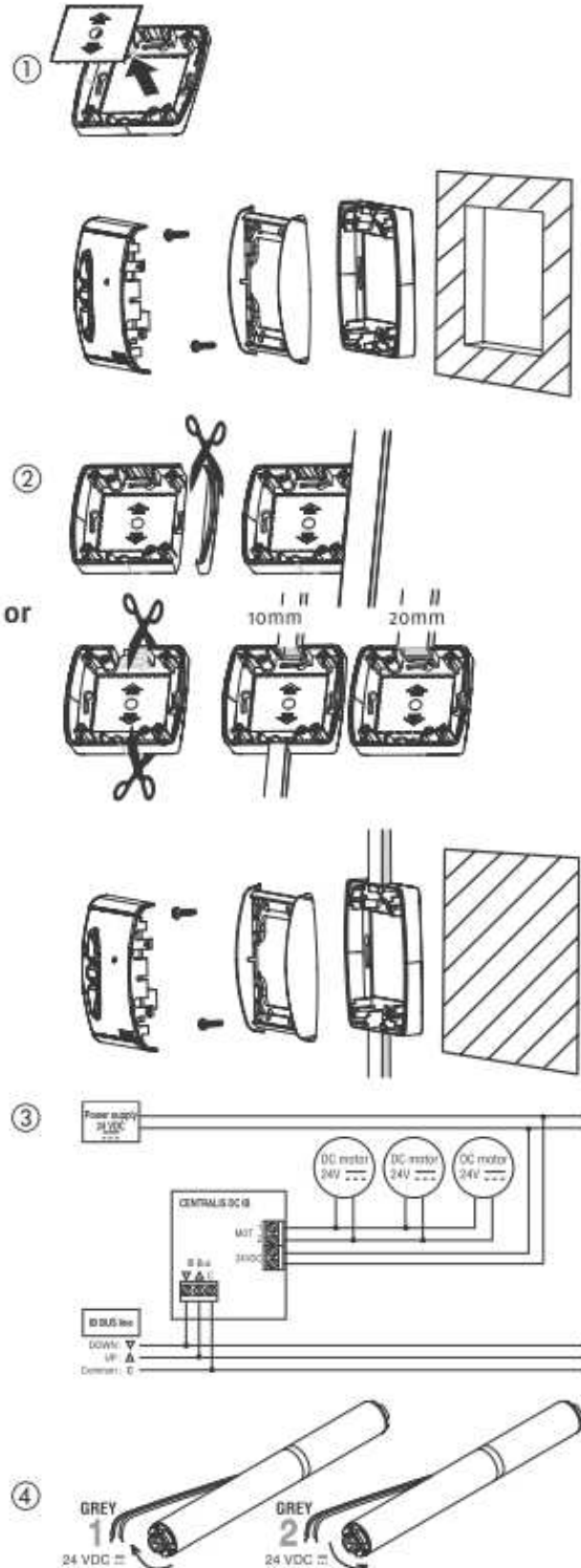
- Connect the motor's grey wire into the 1 plug ⇒ the motor runs in a clock wise rotation.
- Connect the motor's grey wire into the 2 plug ⇒ the motor runs in an anti clock wise rotation.

WARNINGS:

- CENTRALIS DC IB can control up to three Concept 25 motors.

To supply the CENTRALIS DC IB use only SOMFY approved power supplies.

- Be carefull that 24 V power supply connection in the motor input destroys the product.



somfy